

BMF 2500 – Benefits at a glance

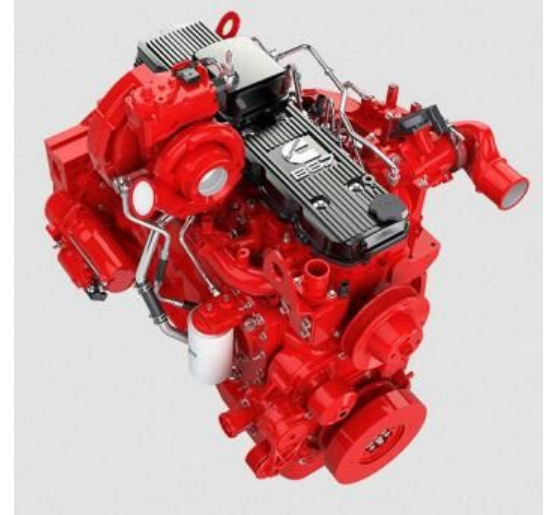


Michael Witsch, Product Manager Pavers/Feeders



BMF 2500 M/S – The Engine

- Cummins Stage V/T3 B6.7 – C225
- Power: 168kW/224PS
- ✓ Reduced emission
- ✓ Reduced fuel consumption
- ✓ Increased fuel tank +110l (360l)



BMF 2500 M/S – Dimensions & Transport

- Transport width: 2,55m
- Separated transport for offset conveyor possible
- ✓ Easier transport
- ✓ Increased safety and comfort if the screed is only half side blocked
- ✓ Separated transport of offset conveyor and hopper (for paver)



- Feeding capability: **4000t/h** w/o offset conveyor, **2000t/h** with offset conveyor
 - ✓ Complete emptying of the truck in 32s
- Huge material tunnel
 - ✓ Feeding of huge amount of material-> less cooling of the material



- Conical augers at hopper
 - ✓ Avoids physical and thermal segregation
- Hydraulic adj. belt height for material transfer
 - ✓ Better material transfer, less segregation/compaction

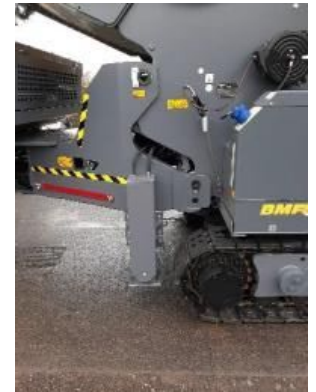
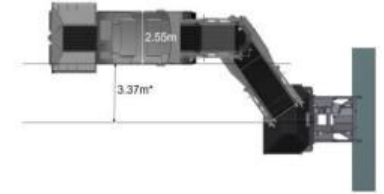
BMF 2500 M/S – The Belt

- Robust rubber belt due to integrated metal struts and belt guidance by means of roller chains
 - ✓ Lifetime up to 3500h
 - ✓ Belt repair kit
 - ✓ Machine availability even with small cracks in the belt
 - ✓ no (thermal) belt stretching
 - ✓ No need for a belt heating system
- Metal scraper
 - ✓ Adjustable
 - ✓ Heated scraper as option
 - ✓ Material will be not transferred under the belt



BMF 2500 M/S – The offset conveyor

- Offset conveyor with a length of 6,5m
 - ✓ Can be retrofitted in the field (für S feeder)
 - ✓ Feeding of 2 paver in parallel
 - ✓ Can be easily attached or detached to the base machine depending of job site conditions
 - ✓ Double scraper and rubber chute as standard equipment
 - ✓ Hydr. feet as standard



BMF 2500 M/S – Comfort & Visibility

- Hydr. adjustable platform
 - ✓ Ideal view over the entire machine environment
 - ✓ Increased distance to the hot material
- Weather house
 - ✓ Best weather protection in any condition
- Flexible adjustable control panel and seat unit
 - ✓ Enhanced comfort and ergonomics
 - ✓ Joystick for easy operation of the main functions
 - ✓ The right information on the display at any time



BMF 2500 M/S – Comfort & Visibility



- Invest
 - ✓ Feeder and offset conveyor can be used separately
 - ✓ More versatile use of the feeder (with and without offset conveyor)
 - ✓ Less wear of the offset conveyor
 - ✓ Offset conveyor can be used on several feeders
- TCO
 - Fuel consumption
 - ✓ Average fuel consumption of 7-9l/h
 - ✓ No belt heating system-> significantly reduced fuel consumption
 - Maintenance
 - ✓ High belt lifetime up to 3500h
 - ✓ Partial repair if the belt possible