

# RoadScan

MAKING QUALITY MEASURABLE

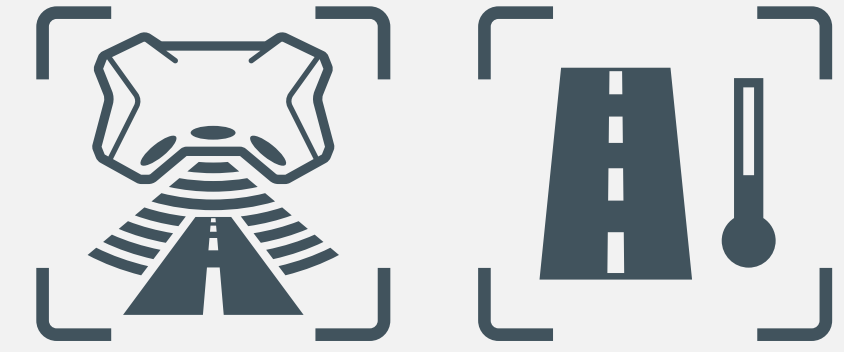
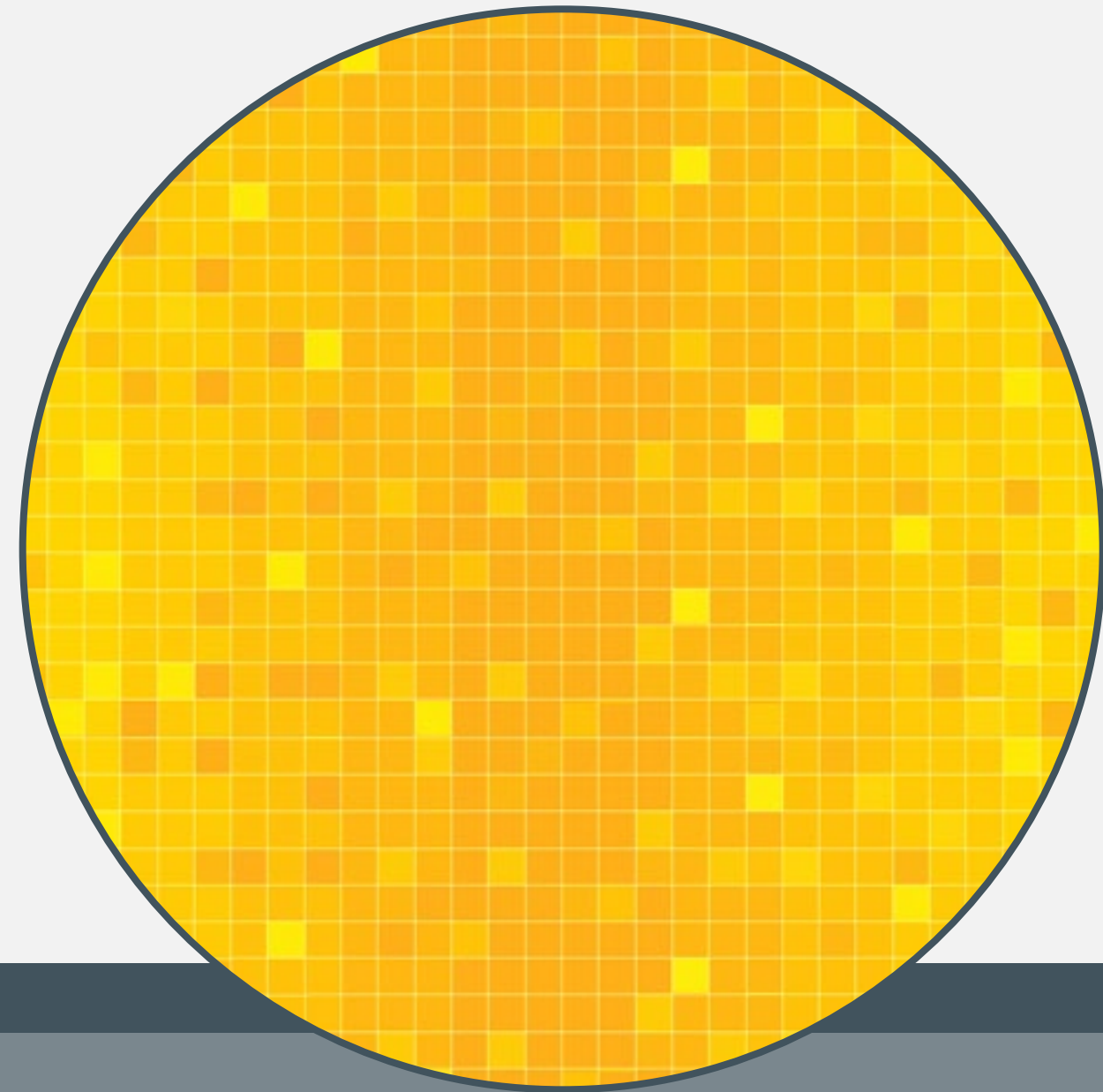




## Thermal sensor

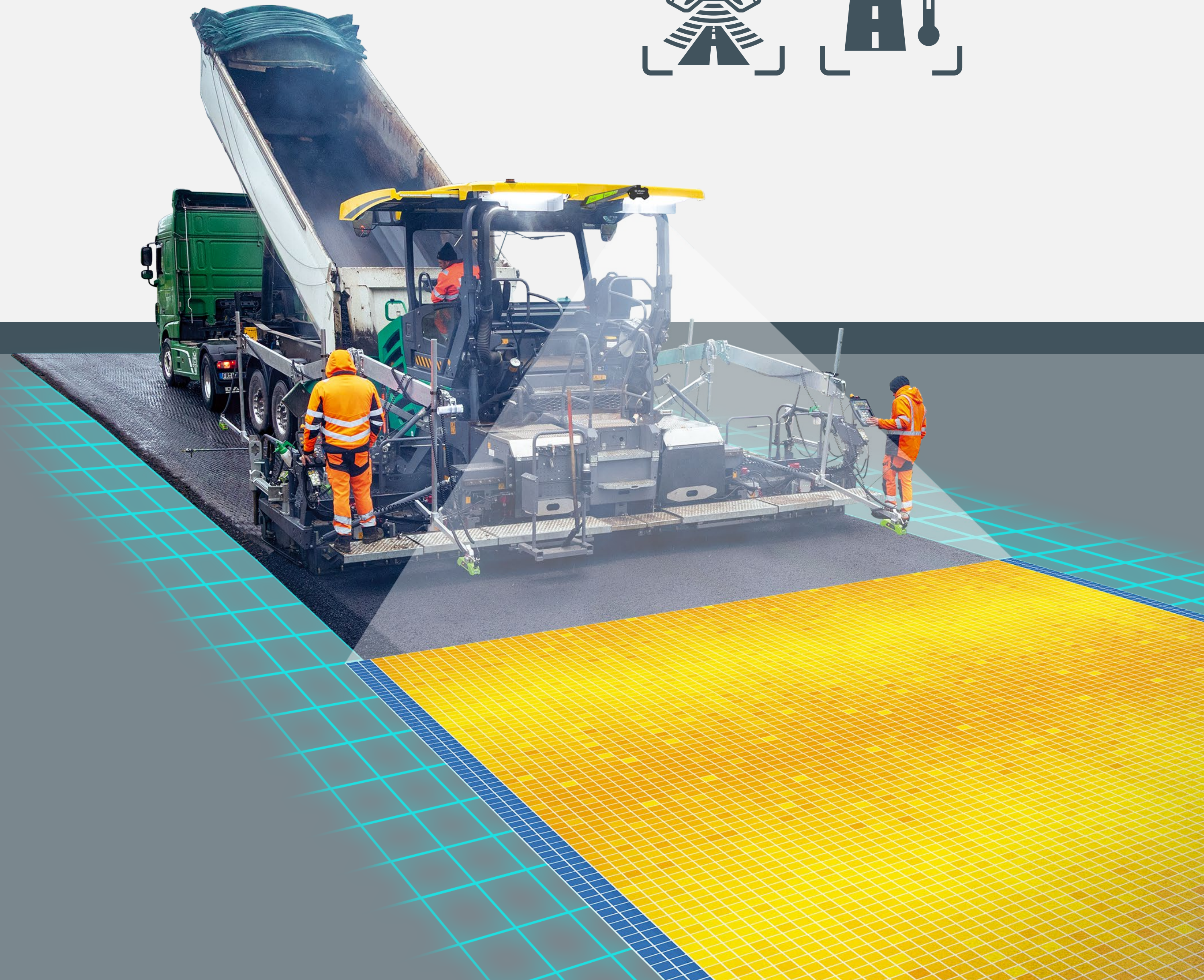
- > High-precision thermal sensor with 100% measurement coverage
- > Compact dimensions and a low weight for easy transport and simple installation
- > Plug & play: sensor is easy to commission without any further adjustment
- > Robust design and no moving parts – for technology you can rely on

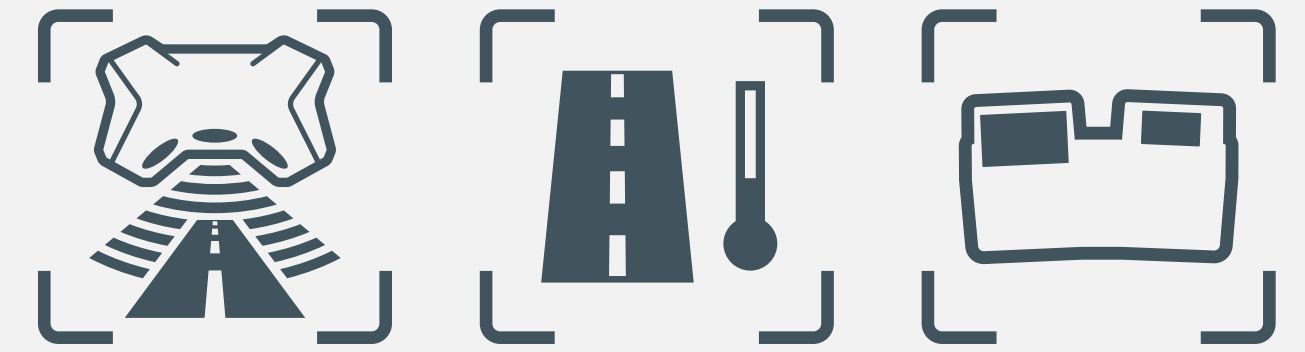
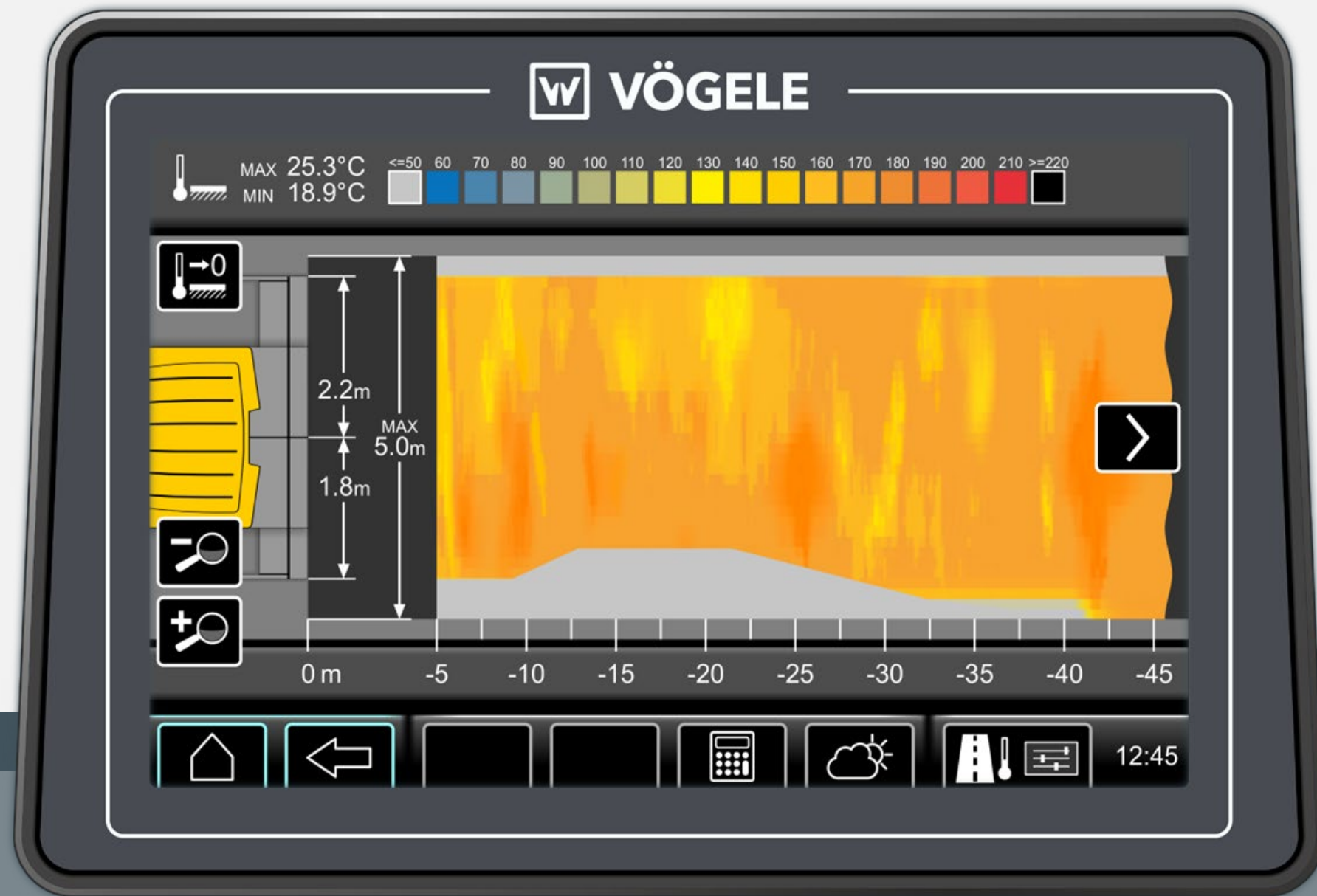




## Thermal image

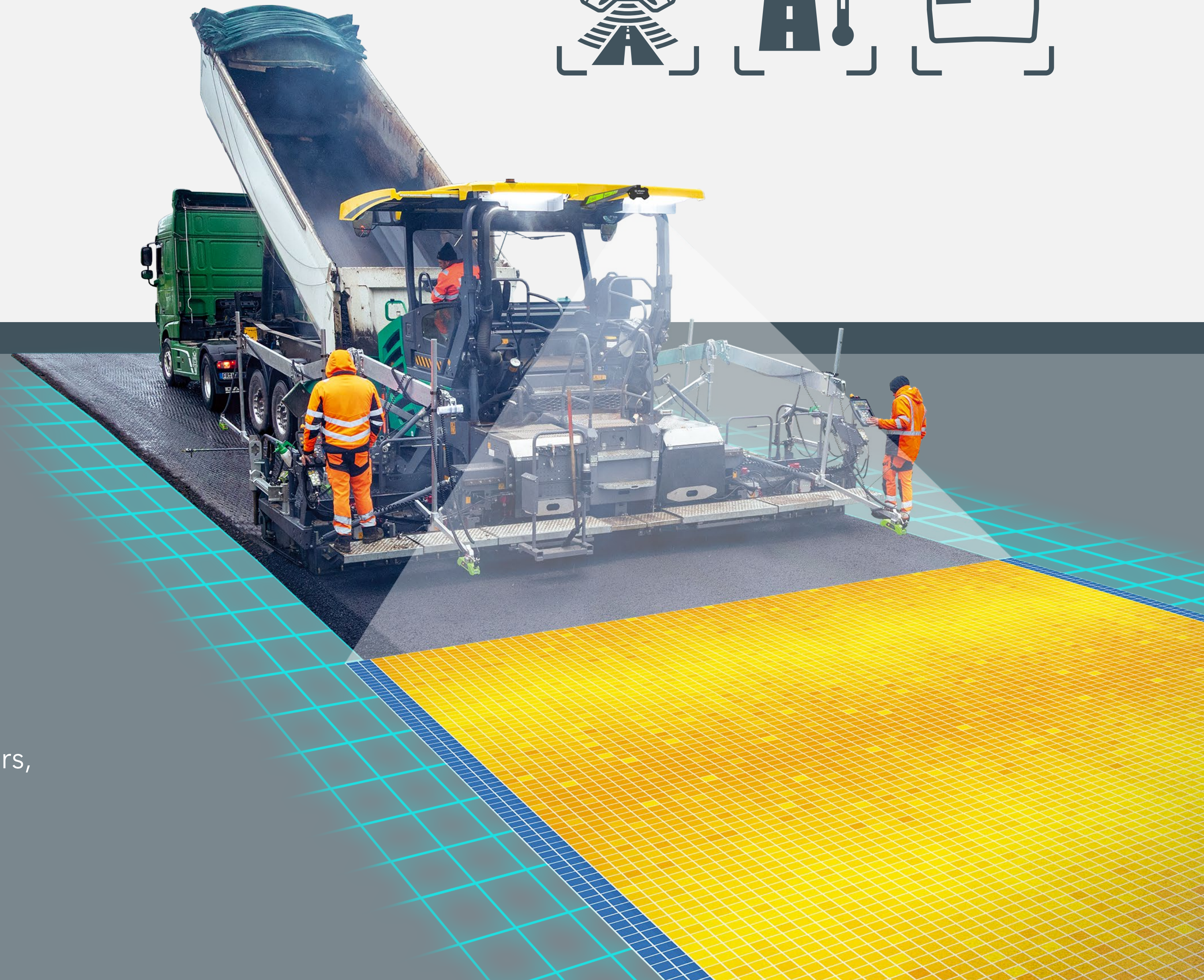
- > Temperature measurement across full pave width up to 13 m
- > Maximum measuring width is composed of 130 squares, each measuring 10 x 10 cm
- > Measured value resolution of 0.1 °C
- > Measurable temperature range between 0 °C and 280 °C, tolerance just  $\pm 2\%$

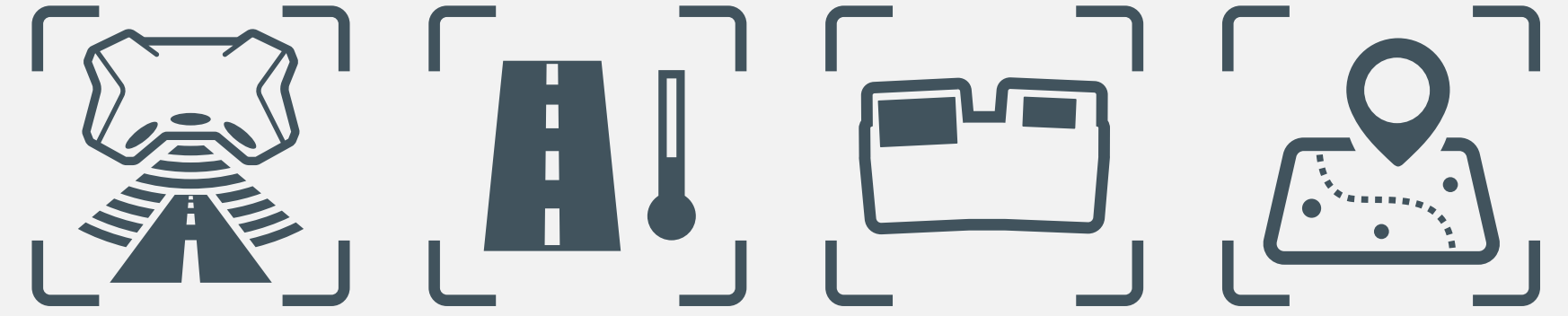




## Real-time display

- > Detailed real-time display via Premium Touch on the ErgoPlus 5 paver operator's console
- > Live view of the thermal image with zoom-in function
- > Sources of interference in the scanned area (e.g. sensors, rollers, people) are suppressed automatically
- > Automatic detection of edges





## GPS position, connectivity and other parameters affecting outcome

- > StarFire™ double-antenna system for exact positional data
- > Secure data transfer to the John Deere Operations Center™
- > Weather station records weather data such as wind strength, wind direction, ambient temperature, air pressure and humidity
- > Pyrometer in front of undercarriage measures and records roadbase temperature ahead of paving





# Analysis and documentation with WPT Paving Pro in the John Deere Operations Center™



# Jobsite Analyzer in the John Deere Operations Center™

- > View of thermal images from anywhere
- > Detailed documentation for clients and contractors

**JOHN DEERE** | **WIRTGEN GROUP** | Operations Center | Operations Center Demo

Map | Setup | Plan | Analyze | More

### Welcome Bob

Jobsites | Equipment

Open | Completed

Search

Active

April 7, 2025 (3)

- Rodalben**  
Start: 8:02 AM | 113 m<sup>3</sup>/h | Last hour: 3.163 m<sup>3</sup> of 3950 m<sup>3</sup> Volume
- Hettenleidenheim**  
Start: 7:52 AM | 4.3 m/min | Last hour: 920 m of 2.500 m Distance
- A6 - Kaiserslautern**  
Start: 6:57 AM | 325 m<sup>3</sup>/h | Last hour: 6.344 m<sup>2</sup> of 8.200 m<sup>2</sup> Area

March 7, 2025 (1)

- Jettenbach**  
Start: 8:16 AM | 380 t/h | Last hour: 55.125 t of 70.000 t Fine Grain Conveyor

Asphalt Paving | RoadScan Temperature Data

Compare | Overlay | Share/Export

Legend: > 180 (31%), 180 (5%), 160 (4%), 140 (23%), 120 (15%), 100 (17%), 80 (5%)

Contour: 0% | 100%

Opacity: 0% | 100%

Google | Summary | Data Analysis | Timeline

#### Hettenleidenheim RoadScan Temperature D...

View in Work Analyzer

Start: April 7, 2025 7:52 AM  
End: -

Work Totals	
Distance	920 m
Area	6.900 m <sup>2</sup>
Paved Material Quantity (Calculated)	1374.5 t
Paved Material Quantity (Actual)	1382.7 t
Aread Density (Target)	199.2 kg/m <sup>2</sup>
Fuel Total	95.9 l

Performance	
Working	4 hr 23 min
Fuel Rate	12.7 l/h
Pave Speed	4.5 m/min
Area / Hour	1.574 m <sup>2</sup> /h
Laydown Rate	314 t/h

Equipment	
HX 70i 1	WGH0H297CHAA99991
HX 70i 2	WGH0H297CHAA99992
Super 2100 -Si	1H0X911XLM815088

#### Weather

Air Temperature	Air Pressure	Air Humidity	Wind Speed
Average 13° C	Average 12 bar	Average 23 %	Average 12 km/h

# Jobsite Analyzer in the John Deere Operations Center™

- > Analysis for an objective assessment of the construction project
- > Spot analysis allows a selected area to be viewed in detail
- > All the WPT data from machines involved in a construction project (e.g. cold-milling machines, pavers and rollers) are reconciled

**Point Analysis**  
49.434691, 7.776493

Pave Speed	Pave Width	Base Temperature	Asphalt Temperature	Tamper		Screed			
				Speed	Stroke	Vibration Speed	Pressure Bar 1	Pressure Bar 2	Assist Pres
3.0 m/min	460 cm	12° C	148.4° C	950 rpm	8 mm	---	60 bar	60 bar	